



# Charney Chatter

E78 July 2020

## CHARNEY HALL & FIELD TRUST (Charity No. 294765)

The Annual Report of the Trustees will be posted on the village website 14 days prior to the A.G.M. which will be held on the 22<sup>nd</sup> July 2020 at 7.30pm.

### WHAT IT WILL COVER?

About the Trust  
Management Committee  
Chair's Overview  
Treasurer's Report  
Village Hall  
Field

Events & Fundraising  
What we said we would do  
What we need to address  
Can you help?  
Audited Financial Statement  
AGM agenda

You will receive a reminder when the report goes public. Details will also be displayed on the Parish Council notice board together with information on how to obtain a hard copy.

The AGM will be held virtually using Zoom.

Residents can ask questions in advance of the meeting by emailing [charneychaft@gmail.com](mailto:charneychaft@gmail.com) or by contacting David Sibbert on 868734 by 15<sup>th</sup> July.

Any resident wanting to join the virtual meeting should contact Lucy Gildersleeves [gildersleeveslucy@gmail.com](mailto:gildersleeveslucy@gmail.com) by 15<sup>h</sup> July.

**WE WILL BE DELIGHTED TO ANSWER ANY QUESTIONS**

**WE WILL BE DELIGHTED TO TALK TO YOU ABOUT OUR SECRETARIAL VACANCY**

**WE WILL BE DELIGHTED TO TALK TO YOU ABOUT OUR ELECTED TRUSTEE VACANCIES**

THANK YOU FOR YOUR CONTINUED SUPPORT.

# The Jubilee Orchard...

...is beginning to mature. Thank you to those tending it.  
Here's hoping that the Wassailing in January ensures a good fruit crop.



And opposite in the Churchyard - A pyramidal orchid

Watch where you put your feet!

The pyramidal orchid (*Anacamptis pyramidalis*) was chosen as the County Flower of the Isle of Wight, where it abounds on the island's chalk landscape. Like many orchids, it requires a specific fungus to be present in the soil in order to bloom.

Originally a flower of old, semi-natural chalk and limestone grasslands, including graveyards, the pyramidal orchid has shown a penchant for more artificial environments in recent times. Colonies have appeared along motorways and ring-roads, canals, marinas and even at one time at Stansted airport.



# History Group News

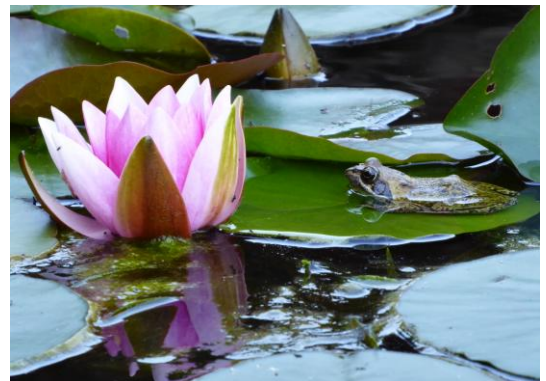
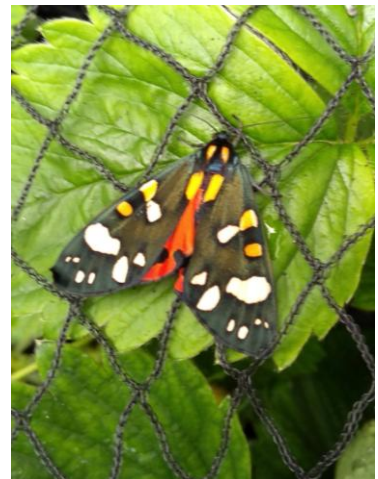
We have been contacted by people researching their Edwardian House in Lowestoft. They were not making much progress until they found that the first owner was a GWW Minns and on googling his name found the Charney history website with pictures of him and his relatives! Very exciting for them. GWW Minns was of course the curate in Charney who noted down and sketched the mummers play here in 1860. We have put them directly in touch with the Minns family so that they can pursue their researches further.

Andy Roberts of Hanney history has been helping us and vice versa with various researches. He has produced a leaflet 'Hanney History Walk' - a "figure of eight" walk through West & East Hanney, with old photographs and notes on some of the buildings you will see on your way. It was first produced as a printed document and can now be [downloaded](#) if you would like to see (it is an interesting read) and perhaps to do the walk!

## What's new on the history website since 2020 June's Charney Chatter?

- More information and additions to the [Dewe](#) family history page.
- The [Charney Bouverie Pusey School layout of buildings](#).

## Charney Nature Watch



If you have any interesting pictures of flora or fauna in your garden or around the Village please send them to [chatterinbox@btinternet.com](mailto:chatterinbox@btinternet.com)

# Would you like to play a valuable part in your local community?

**Charney Hall and Field Trust exists to manage the Village Hall and the Charney Field as resources for the leisure, recreation and education of residents of Charney Bassett, as set out in the CHAFT governing document agreed with the Charity Commission.**

**The Management Trustee body is made up of volunteer representatives from**

- the Parish Council (two Trustees)
- groups or organisations in the village which might or do make use of the hall or field, *and*
- three elected representatives of the Charney Bassett community.

The organisation representatives are chosen by their respective organisations. In 2019-20 the following groups chose to put forward a representative on the CHAFT Trustees:

- Parochial Church Council of St Peter's Church
- Village College (covering use by pilates, yoga and other classes)
- Table Tennis Club

The community representatives are chosen by public election at the CHAFT Annual General Meeting from Charney Bassett residents who have put themselves forward for selection. In practice our community representatives are individuals who are not already Trustees by virtue of being nominated representatives from the Parish Council or village groups and organisations.

CHAFT also reserves the right to co-opt onto the management team individuals who wish to offer support or volunteer a particular skill or role. These co-opted individuals need not be Trustees.

## **What do the Management Trustees do?**

The Management Trustees act for the good of the charity (CHAFT) and its beneficiaries (the village residents). We act together to care for the hall and the field - financially, legally, strategically and in maintenance. We meet roughly four times a year in full committee and may have other team meetings as required. We run social and fundraising activities to support and promote use of the hall and field for the purpose of leisure, recreation and education of Charney Bassett residents. As such, Management Trustees enable CHAFT as a charity to play a role in the Local Plan and in community wellbeing, and to respond creatively to the needs and interests of residents.

Because the Management Trustees are a team bringing together different skills, perspectives and interests, we do not expect everyone to do everything. Rather, we share out much of the work between small groups of Trustees and other volunteers, in task-oriented teams focusing on different aspects of what needs to be done, according to our individual strengths and interests.

## **If you**

- **are a Charney organisation or a hall user group and wish to put forward a representative,**
- **are an individual interested in becoming a Management Trustee**
- **feel that you have ideas, skills etc. that you would like to offer in another capacity,**

**please do get in touch with Lucy Gildersleeves ([gildersleeveslucy@gmail.com](mailto:gildersleeveslucy@gmail.com)) or by emailing [charneychaft@gmail.com](mailto:charneychaft@gmail.com). Thank you.**

## From the Parish Council

### **Any concerns about roads and paths?**

As previously reported, [Fix My Street](#) can be used for complaints about potholes and roadside vegetation. In the near future we will have our own pothole superuser in place which should help get these fixed more quickly (details to follow later in the year).

We know OCC is allocating extra funds to repair and clear cycleways and footpaths, but most will go to routes that will help get people back to work and children to school.

If you have concerns about our rural paths, report these to Kay Adamson (01235 868599) who can decide how best to address them. Unfortunately OCC response times can be slow, as we are finding with the damage caused by badgers on bridleway 5 (to Stanford-in-the-Vale).

### **Dodgy Tree**

We have been told that OCC intends to fell the cherry tree by the church. This piece of land is classified as highway verge. We have asked for more information as to its condition and plans for replanting.

### **Did you know that ...**

putting non-recyclable items into recycling can contaminate a WHOLE truckload leading to it being rejected at the recycling facility? If you need reminding what goes where then South Oxfordshire and the Vale of White Horse district councils have developed a [short online quiz](#) to help clear up any confusion.

## Covid-19 – Thanks to all volunteers who have rallied round to support the community and their neighbours

*[From the PC minutes of 13<sup>th</sup> May 2020]*

Cllr. Mrs Castle reported that she had a list of volunteers who had responded to 12 requests (to date) for help with shopping, prescriptions and one electrical emergency. She was also being assisted by Cllr. Mrs Adamson and amongst other things had arranged for several messages to be circulated around the village, including on the helplines available for the County and District Councils. The local volunteer response served to emphasise the close-knit nature of the village community.

*[From the PC Chairman's Annual Report, May 2020]*

We have a marvellous spirit within the village, epitomised by the people who have volunteered their help and support for those undergoing self isolation during the Covid-19 crisis. Your help is invaluable and continues to be so. From a Parish Council's perspective, I'd like to give special thanks to Mary Castle and Kay Adamson who have given assistance through coordination of essential activities for those in need.

We recognise that the current restrictions imposed on social distancing and leisure pursuits are having a devastating effect on the day-to-day running of the 'local'. However, in typical British fashion, Ian and Jacqui have adapted brilliantly and we can enjoy a large range of delicious takeaway food. Well done to all at the Chequers!

## Charney 100 Club Draw

The results of the June draw are:

£50 No 113 Evelyn Campbell and  
Steve O'Connor

£25 No 74 Sue Dobson

Kindly drawn by Peter Busby.

If anyone would like a number or extra numbers please contact: Charney 100 club organisers, Sally or Evelyn at [charney100club@gmail.com](mailto:charney100club@gmail.com)

## What's New On The Charney Bassett Website

- [Oxfordshire libraries](#)
- [Parish Council finance 2019-20](#)
- [People urged to wear face coverings and stay alert](#)
- [News from your MP – David Johnston](#)
- [Police & Crime Commissioner's June Newsletter](#) – please note that this is the final month this will be posted on the Charney website. If you wish to receive this newsletter in future, go to the P&CC [web site](#) and subscribe via the link at the bottom of the page.

## St Peter's Church

The Village church is now open for private prayer once a week on Mondays. For details of other church openings, see the [Benefice website](#).

## More Thanks!

Thank you to the volunteer from Buckland Road who has cut the grass and hedges at the Longworth Road entrance gates and has cleaned the signs

## Plant Stall

Though the initial influx of seedlings and young plants has dwindled, the plant stall remains open. Surplus plants and produce are still welcome and can be placed in the stall. Thank you to all who have supported the stall so far.

If the owner of the white plastic tray, who kindly left all the kale, would like the tray returned, please contact [chatterinbox@btopenworld.com](mailto:chatterinbox@btopenworld.com).

## In the dark about reporting power outages?

By calling 105 it is possible to report damage, find out about a power cut, and also get automatic status updates.



Julie Ingram-Johnson would like to thank all those who have supported the Face Mask project. A total of £484 has now been raised for Acorns Children's Hospice Trust. Masks are still available, with the table set up daily in the carport of Gunton Barn.

# HOW TO WEAR A NON-MEDICAL FABRIC MASK SAFELY

[who.int/epi-win](http://who.int/epi-win)

Do's →



Clean your hands before touching the mask



Inspect the mask for damage or if dirty



Adjust the mask to your face without leaving gaps on the sides



Cover your mouth, nose, and chin



Avoid touching the mask



Clean your hands before removing the mask



Remove the mask by the straps behind the ears or head



Pull the mask away from your face



Store the mask in a clean plastic, resealable bag if it is not dirty or wet and you plan to re-use it



Remove the mask by the straps when taking it out of the bag



Wash the mask in soap or detergent, preferably with hot water, at least once a day



Clean your hands after removing the mask

Don'ts →



Do not use a mask that looks damaged



Do not wear a loose mask



Do not wear the mask under the nose



Do not remove the mask where there are people within 1 metre



Do not use a mask that is difficult to breathe through



Do not wear a dirty or wet mask



Do not share your mask with others

A fabric mask can protect others around you. To protect yourself and prevent the spread of COVID-19, remember to keep at least 1 metre distance from others, clean your hands frequently and thoroughly, and avoid touching your face and mask.



**DEADLINE FOR NEXT ISSUE:** 20<sup>th</sup> July

Entries to: [chatterinbox@btopenworld.com](mailto:chatterinbox@btopenworld.com)

Charney Chatter e-news is published monthly on behalf of the Parish Council and co-edited by Steph Wright 867418 and Amanda Graham 868974 in liaison with the editors of the village websites, John Wright and Ian Graham. Occasional news updates may be sent to subscribers at the discretion of the editors. Contributions should be e-mailed to [chatterinbox@btopenworld.com](mailto:chatterinbox@btopenworld.com) by the 20<sup>th</sup> of each month in WORD format. You can unsubscribe by e-mailing [echatter@btopenworld.com](mailto:echatter@btopenworld.com). Residents without e-mail facilities can ask for a hard copy to be delivered.

[The Parish Council's policy on privacy and data protection](#)