

### Vehicle crime

Witness appeal - A number of vehicles were broken into in the Southmoor area overnight on the 5<sup>th</sup>- 6<sup>th</sup> June 2019. Although you can't see a face in the image the clothing is quite distinctive. If you have any information or CCTV please call 101. Items such as money and laptops were stolen.

The offender/s may have used a device to scan the key signal to open the vehicle. If you have electronic keys please store them in a tin or signal blocking pouch. This will stop the signal being relayed and help prevent thieves from stealing your car, or items from it.



Local residents are advised to take crime prevention measures to help protect themselves from becoming a victim:

- Do not keep anything in your vehicle.
- Hide your car keys away from windows and doors and out of sight.
- Park your car in a well-lit area — either on your driveway, or on the roads under a street lamp.
- Lock all windows and doors of your car and make sure to activate your car alarm if you have one.
- Consider fitting a letterbox defender or restrictor. This prevents burglars from poking tools through the letterbox to open latches from the inside, or reaching nearby car and house keys. A lockable letterbox on the outside of the property is also an option.
- Ensure your doors and windows are locked, if you have a chain on the inside of your door, use it.

If you see anything suspicious or find evidence of an attempt to break into your vehicle call 101, the 24-hour Thames Valley Police non-emergency number or report online ([www.thamesvalley.police.uk/report-a-crime](http://www.thamesvalley.police.uk/report-a-crime)). If a crime is in progress, call 999.



Following these events we have increased our patrols and added signage in the local area reminding residents not to leave items in vehicles.

### Keep burglars out this summer

Whether you are staying at home, or going away on holiday, here's a reminder of our top tips to protect your home against burglary this summer:

#### **At Home**

- Fit window opening restrictors to all ground floor and other easily accessible windows. This will allow ventilation while restricting access.
- Close and lock all windows and doors, even if just out in the garden.
- Remove window and door keys from the locks, store out of reach and away from your letterbox.

- Keep valuables out of sight, along with any visible signs including charging cables.
- Hide the keys to your vehicle, and if you have a keyless entry, store the fob in a RFID pouch to block the signal.

### Going Away

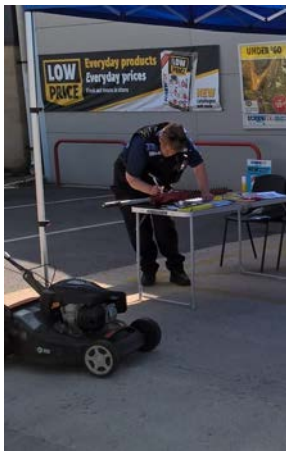
- Lock all windows and doors.
- Check side gates, sheds and garages are locked and tools and ladders are not accessible to break into your home.
- Store all keys out of sight and away from your letterbox, doors and windows.
- Use a RFID pouch to store fobs for keyless entry vehicles.
- Make your home look occupied by using a timer switch to turn on lights at night.
- Ask a trusted friend to look after your home while you are away.
- Invite a neighbour to park their vehicle on your drive while you are away.
- Don't post details about your holiday on social media until you return home.

For more tips to protect your home, download your free Home Security Guide from the Thames Valley Police website here: <https://www.thamesvalley.police.uk/SysSiteAssets/media/downloads/thames-valley/advice/home-security-guide.pdf>

Please also sign up to Thames Valley Alerts ([www.thamesvalleyalert.co.uk](http://www.thamesvalleyalert.co.uk)) to receive messages from the Police about crimes in your area, security advice, meetings etc.

By working together we can build community resilience to deter burglars from targeting homes within the area!

### Tool marking



PCSO James Pelling and PCSO Maralyn Pack had a successful tool marking event which took place at Screwfix in Faringdon on the 29<sup>th</sup> June. Security advice was given and we will be looking at doing more in the future so please keep an eye out on our Facebook page ([www.facebook.com/tvpsouthandvale](http://www.facebook.com/tvpsouthandvale))

Security marking your tools makes them less desirable to thieves and also increases the chances of them being returned to you if stolen.



### Please get in touch/follow us using the following:

E-mail: [FaringdonNHPT@thamesvalley.pnn.police.uk](mailto:FaringdonNHPT@thamesvalley.pnn.police.uk)

Twitter: @tvpsouthandvale

Facebook: [www.facebook.com/tvpsouthandvale](http://www.facebook.com/tvpsouthandvale)

Phone: 101

**Always phone 999 in an emergency**

